



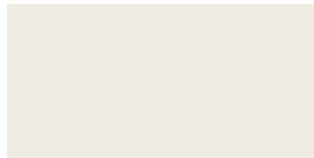
iTopker - Masai Piedra Natural

 **ELEGANZA**
modern movement redefined
kitchen · bath · tile

iTOPKER

iTopker offers the next step in the evolution of porcelain tiles by offering 12mm thick slabs ideal for counter top installations. This innovative series offers improvements in surfaces production by creating a product that is low in porosity and high heat and scratch resistance. Itopker is rated for indoor and outdoor, wall and floor for both commercial and residential installations enabling creative continuity between indoor and outdoor kitchens. This easy to install and easy to maintain series comes in a 59"x126" slab size and its available in 11 different colors.

Size Available: 59"x126"x12mm



Silk Blanco



Ice Super Blanco



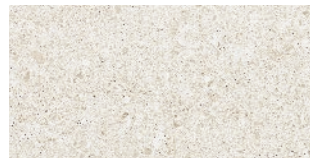
Touche Super Blanco Gris



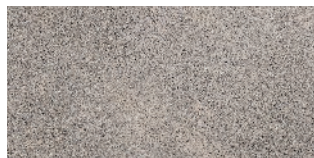
Touche Super Blanco Crema



Silk B Camel



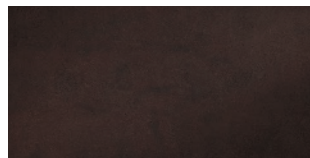
Petra Crema



Masai Piedra



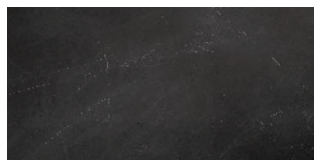
Silk B Moka



Nobuk Marron






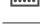


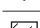








Silk B Negro



Storm Negro

TECHNICAL INFORMATION FOR TOUCHE S.B. CREMA + S.B. GRIS

	COLOR VARIATION	V2
	PEI	4
	D.C.O.F.	N/A
	MOHS	5
	WATER ABSORPTION	<0.5%
	PRINTING	HD INK JET
	USAGE	WALL / FLOOR
	CHEMICAL STAIN RESISTANT	YES
	FROST RESISTANT	YES
	FINISH	NATURAL + HIGH GLOSS POLISHED
	TYPE	GLAZED PORCELAIN
	APPLICATION	COUNTERTOPS
	COUNTRY OF ORIGIN	SPAIN
	EDGE FINISH	RECTIFIED
	RECYCLED CONTENT	N/A

PLEASE SEE NEXT PAGE FOR COMPLETE TECH INFO

SIZES, PACKAGING, AND WEIGHT

Sizes*	PCS / A-Frame (SF)	LBS / A-Frame
59"x126"x12mm	20 / 1,032.96 SF	6990.86 LBS



*Nominal

TECHNICAL INFORMATION

STORM NEGRO

PETRA CREMA

B-BLANCO, B-PERLA, B-CAMEL, B-MOKA, B-GRIS, B-NEGRO







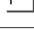


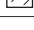
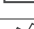




	COLOR VARIATION	V2	V3	V1
	PEI	3	4	3-4
	D.C.O.F.	N/A	N/A	N/A
	MOHS	6	9	5
	WATER ABSORPTION	<0.5%	<0.5%	<0.5%
	PRINTING	HD INK JET	HD INK JET	HD INK JET
	USAGE	WALL / FLOOR	WALL / FLOOR	WALL / FLOOR
	CHEMICAL STAIN RESISTANT	YES	YES	YES
	FROST RESISTANT	YES	YES	YES
	FINISH	NATURAL	BUSH-HAMMERED	NATURAL
	TYPE	GLAZED PORCELAIN	GLAZED PORCELAIN	GLAZED PORCELAIN
	APPLICATION	COUNTERTOPS	COUNTERTOPS	COUNTERTOPS
	COUNTRY OF ORIGIN	SPAIN	SPAIN	SPAIN
	EDGE FINISH	RECTIFIED	RECTIFIED	RECTIFIED
	RECYCLED CONTENT	N/A	N/A	N/A

TECHNICAL INFORMATION

ICE SUPER BLANCO

MASAI PIEDRA

NOBUK MARRON

	COLOR VARIATION	V1	V2	V1
	PEI	5	3	3
	D.C.O.F.	N/A	N/A	N/A
	MOHS	5	8	6
	WATER ABSORPTION	<0.5%	<0.5%	<0.5%
	PRINTING	HD INK JET	HD INK JET	HD INK JET
	USAGE	WALL / FLOOR	WALL / FLOOR	WALL / FLOOR
	CHEMICAL STAIN RESISTANT	YES	YES	YES
	FROST RESISTANT	YES	YES	YES
	FINISH	HIGH GLOSS POLISHED	BUSH-HAMMERED	NATURAL
	TYPE	GLAZED PORCELAIN	GLAZED PORCELAIN	GLAZED PORCELAIN
	APPLICATION	COUNTERTOPS	COUNTERTOPS	COUNTERTOPS
	COUNTRY OF ORIGIN	SPAIN	SPAIN	SPAIN
	EDGE FINISH	RECTIFIED	RECTIFIED	RECTIFIED
	RECYCLED CONTENT	N/A	N/A	N/A